



CorelDRAW[®]
GRAPHICS SUITE 2021

Product Guide

Say hello to CorelDRAW Graphics Suite 2021

Professional graphics software that fuels your creative fire.

Graphics professionals are looking for powerful solutions to boost their productivity. Deadlines and margins have never felt tighter. Businesses of all sizes are seeking new ways to connect with customers. And as the home has become central to how many of us work, staying connected with colleagues, clients and even friends looks very different from just months ago.

CorelDRAW® Graphics Suite 2021 has evolved to meet these quickly changing needs head on. Doubling down on collaboration, our next-generation tools make it possible to gather comments and resolve feedback in real time, no matter where team members or clients are located. Boosting the design process, advanced illustration and photo editing features help you achieve the exact look and effect you envisioned in record time. Plus, new workflows put you in control of your pages and assets, taking projects from ideation to final output, faster.

With a laser focus on collaboration, productivity and flawless results,

CorelDRAW Graphics Suite 2021 is an essential tool for the way designers work today.

Designed to get the job done: Tackle projects quicker and more easily with new, progressive illustration and photo editing tools. Boost your productivity with next-generation collaboration that streamlines your design journey and review process, and create more efficiently with our new flexible design space with multipage and multi-export workflows.

Push the boundaries of design: Applications for vector illustration and layout, photo editing, and typography help you fully unleash your creative genius in digital and print. Our new Draw in Perspective feature simplifies a typically complicated workflow, giving you more time to do what you love.

Control your creative journey: Enjoy the freedom to choose how you create your best work thanks to powerful graphics tools built for Windows, macOS, mobile, web, and now, an all-new app for iPad. Customizable workspaces on Windows and Mac let you learn and thrive in a space that's tailored just for you. Create compelling designs how you want, when you want, and where you want.



CorelDRAW is everywhere!

Enjoy a true cross-platform experience on Windows, Mac, web, iPad, and other mobile devices. With a new touch-optimized user interface, CorelDRAW.app™ expands what's possible on mobile and tablets, and a new iPad app makes it even easier to design on the go.

Designed for Windows 10

- **Pen and Touch** – Create quick adjustments with your finger or a stylus, thanks to a Touch workspace that maximizes the size of your drawing window by displaying only the tools and commands used most often. Work quickly and efficiently with Windows Real-Time Stylus pen-compatible tablets, such as the Microsoft Surface, in addition to Wacom tablets and devices.
- **Dial** – Enjoy support for wheel devices, such as the Microsoft Surface Dial. Experience an alternative way of working in CorelDRAW® by using touch and dial alone. Put your keyboard aside and try the contextual onscreen UI.
- **Display performance** – CorelDRAW Graphics Suite 2021 on Windows is optimized to fully leverage your system's graphics processing unit (GPU) and deliver significantly smoother panning and zooming. Whether you're using a mouse or trackpad, you can navigate even the most complex layouts with perfect fluidity.

Don't let your desk limit your imagination

- Turn great ideas into amazing designs the moment they arise with the versatile CorelDRAW.app.
- Access your work whenever and wherever it's convenient for you with this powerful web app, running on any major browser, on any device.
- With a new touch-optimized user experience, CorelDRAW.app expands what's possible on mobile and tablets, and a new iPad app makes it even easier to design on the go.

Designed from the ground up for Mac

- **Native macOS** – CorelDRAW Graphics Suite for Mac was built from the ground up for an experience that's natively Mac. Menus, windows and views, fields and labels, buttons, and other UI elements reflect the latest in macOS Big Sur. And with native support for Apple Silicon, CorelDRAW Graphics Suite 2021 leverages the exceptional power and performance of the Apple M1 chip.
- **Sidecar** – Accelerate your workflow by using your iPad as a second display. Thanks to support for Sidecar on macOS, you can design on an iPad with an Apple Pencil and see your changes reflected in CorelDRAW on your desktop.
- **Touch Bar** – Leverage the time-saving features of the Touch Bar on MacBook Pro. Not only does this multitouch display give quick access to OS-level controls, but also to functionality specific to CorelDRAW, such as layout settings, text controls, and more.



Konrad Jahnz

Fuel your creative fire



Find all the professional power you need to create flawless design projects on deadline.



Graphics & Illustration

Use the powerful vector illustration tools in CorelDRAW to transform lines, shapes, and curves into complex works of art and stunning designs. Explore the new Draw in Perspective feature to simplify your workflow when drawing buildings, scenery, or product concepts from virtually any point of view.



Page Layout

Get all the tools you need to create layouts for brochures, multi-page documents and more. Set up your projects faster with new precision layout tools, and view, manage, edit and publish all digital project assets in one flexible design space.



Collaboration

Save time with next-generation collaboration features. Seamlessly connect with clients and colleagues in real time. Invite reviews to view, annotate, and comment directly on your CorelDRAW design file using CorelDRAW.app.



Typography

Arrange type beautifully with a complete set of typography tools. Add effects like block shadows and contours, fit text to paths, and wrap text around objects. Enjoy OpenType features such as variable font support, ligatures, ornaments, small caps, swash variants, and more.



Photo Editing

Retouch and enhance your photos with Corel PHOTO-PAINT's powerful photo editing tools. Explore the transformed Adjustments workflow to apply critical image enhancements non-destructively and in context. Use the impressive Replace Colors tool for a faster, easier route to flawless photos.



ENZORE

What's included?



CorelDRAW®

Intuitive vector illustration and page layout application that meets the demands of today's busy graphics professionals



Corel
PHOTO-PAINT™

Professional image-editing application that lets you quickly and easily retouch and enhance photos



Corel®
Font Manager

Standalone font management application that makes it simple to find, organize, and preview fonts stored locally or in the network



Corel®
PowerTRACE

Utility embedded in CorelDRAW that uses AI to quickly and accurately convert bitmaps into editable vector graphics



CorelDRAW™.app

Sign into the web app when you are on the go to access your work anywhere, or let clients and business partners access your design files for review and annotation*



NEW!
CorelDRAW™.app
for iPad

Use the iPadOS app to expand what's possible for designing on the go



Corel®
AfterShot™ HDR

Photo editor that lets you create HDR images and make easy corrections and enhancements to your RAW or JPEG photos

Royalty-free content and built-in learning

- 7,000 clipart, digital images, and vehicle wrap templates
- 1,000 high-resolution digital photos
- Over 1,000 TrueType and OpenType fonts
- 150 professionally designed templates
- Over 600 fountain, vector, and bitmap fills
- Expert insights, product hints, and training videos

Automation support

- JavaScript (JS): the integrated API supported on Windows and macOS enables developers to automate tasks and extend functionality
- Microsoft Visual Basic for Applications (VBA)**: Integrated development environment that includes 64-bit support and that helps you streamline your workflow by automating tasks
- Microsoft Visual Studio Tools for Applications (VSTA)**: Toolset that includes the power of the .NET framework, so you can create time-saving macros to automate tasks and extend functionality

Internet connection is required to access some of the included software components, online features, and content.

* Collaboration features are available exclusively with a CorelDRAW Graphics Suite subscription, licensing with maintenance, or an additional purchase plan for perpetual license customers.

** Available with CorelDRAW Graphics Suite 2021 for Windows



OCTO

Who is it for?

CorelDRAW Graphics Suite 2021 has the versatility to satisfy any creative need. Chosen by professionals across a variety of demanding industries, including manufacturing, engineering, sign making, marketing, and more, CorelDRAW Graphics Suite is a trusted tool for designers and businesses worldwide.

Branding & marketing

From creative professionals working in advertising and publishing to small businesses producing in-house marketing materials, CorelDRAW Graphics Suite has the tools to create stand-out brand identity assets, alluring sales materials, and more.

Signage & large-format printing

Professionals in the sign and print industry rely on CorelDRAW to create artwork for a variety of outputs, thanks to a powerful color management engine and superior prepress tools.

Apparel & textiles

Whether for screen printing, embroidery, direct-to-garment printing or apparel, CorelDRAW Graphics Suite has all the tools needed to produce and output designs for the fashion industry.

Retail & e-commerce

With dedicated tools for web and print, CorelDRAW Graphics Suite is ideal for creating point-of-sale promotions, online store assets and social media content.

Illustration & fine art

Illustrators and artists alike can combine their talents and skills with CorelDRAW's powerful vector illustration and image editing to create beautiful, sophisticated works of art.

Giving customers choice

Whether you find it easier to manage your business's annual budget using a subscription or you prefer to own software outright, Corel provides choice by not forcing you into one licensing model.

CorelDRAW for businesses and large organizations

Built with teams and large organizations in mind

CorelDRAW Graphics Suite 2021 is the ideal design platform for teams with multiple designers, stakeholders, and approvers working together on projects. Whether team members work on Windows, Mac or both, IT departments have access to easy software deployment, virtualization support, and the zero-footprint CorelDRAW.app to simplify implementation from start to finish. Plus, organizations of any size, including government and academic institutions, can keep budgets on track thanks to flexible licensing that offers the choice of subscription or perpetual programs.

With the CorelDRAW.app, it's all about collaboration!

Enhanced and streamlined collaboration workflows make it simple to send work for review, feedback, and approval in a highly efficient and seamless way. Designers can use Dynamic Text Co-editing to maintain control of specific properties (like the font, size, color, and location of a text element) while giving contributors the ability to implement final copy without compromising design integrity. When it comes time for review, stakeholders can use a variety of commenting and annotation tools in CorelDRAW.app while designers keep track of everything with live comments in CorelDRAW 2021.



Note: Collaboration features are available exclusively with a CorelDRAW Graphics Suite subscription, licensing with maintenance, or an additional purchase plan for perpetual license customers.

Feature Highlights



Firman Hatibu

Advanced Illustration

In a world where time is money, your software should deliver the results you need fast, so you can keep your focus on being creative. Thanks to new precision layout capabilities and the cutting-edge Draw in Perspective feature, CorelDRAW Graphics Suite 2021 makes complicated workflows simple to deliver stunning results in record time.

NEW! Perspective Drawing

Built with speed and increased productivity in mind, this new feature – based on the principles of perspective projection – eliminates the need to first set up complex grids, and displays live previews as you draw, modify, or transform objects. The intuitive camera guides help you smoothly control the depth of field by showing the position of the viewer.

With customizable presets for one-, two- and three-point perspective drawings, the Perspective Drawing toolbar lets you quickly change drawing planes and tailor the appearance of the perspective field to best suit your project or working style.

Easily create multiple perspective groups each with their own unique perspective field within the same page or document.

Minimize headaches when working on an intricate layout by locking a perspective field to prevent accidentally moving horizon lines or vanishing points.

[Watch video](#) 

ENHANCED! Guidelines

When working with guidelines, you can switch views from world scale to page dimensions in a click. In addition, it's easier to manage custom guidelines, so you can set up the framework for a design faster than ever.

NEW! Snap to self

When working on complex designs in CorelDRAW 2021, a new setting allows you to prevent objects from snapping to their own snap points so you can move and transform design elements with ease and precision.



Flexible Design Space

Speed up your creative journey from design to output with new workflows that put you in control of your pages. With all new ways to navigate and manage your projects and their assets, it's never been faster to get from inspiration to done.

NEW! Multipage View

Accelerate the design workflow with Multipage View and manage all pages in a document simultaneously.

Multipage View offers several display options. If you're working on or reviewing files with a fixed sequence, such as brochures, books or magazines, you can arrange pages in order in a column, row, or grid. When a project contains an assortment of distinct but related assets, such as materials for a marketing campaign, Custom mode lets you freely reorganize non-sequential pages with a simple drag-and-drop.

In either mode, you can quickly move objects from one page to another, snap design elements and link text frames page-to-page, interactively resize pages, choose a preset size, and more.

[Watch video](#) 

NEW! Pages docker/inspector

The new Pages docker/inspector lists all pages in a design so you can easily manage them and quickly navigate a project. Each page has a scalable thumbnail preview that reflects its size and content. Reordering pages is as easy as dragging them in the docker. What's more, you can add, delete, and rename pages in one spot, saving you time and effort. With a click, you can switch display modes to either focus on a single page or use the new Multipage View.

NEW! Multi-asset Export

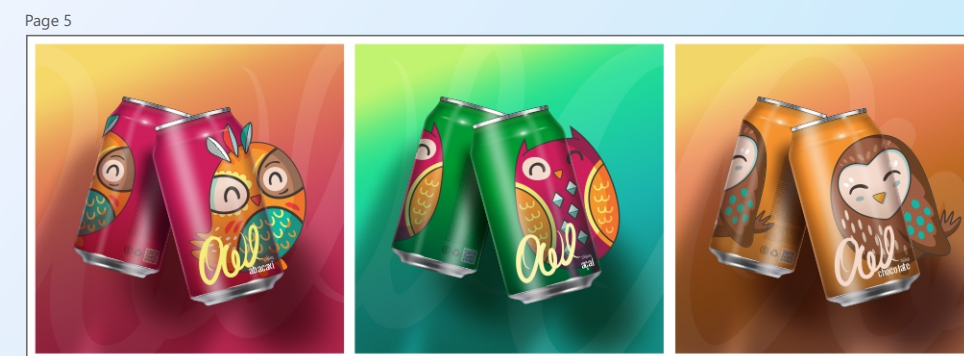
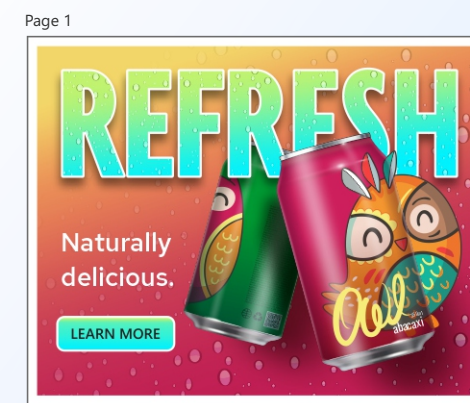
Create a customized list of assets to export. The new Export docker/inspector has a range of flexible, time-saving options for outputting pages and objects.

Send pages or objects to multiple industry-standard formats, including PDF. The same design element can be simultaneously exported with different settings by duplicating it in the Export docker/inspector and modifying the output options. Or you can export several items at the same time using identical preferences.

[Watch video](#) 

NEW! Autofit Page

Another time-saver in CorelDRAW 2021 is the Autofit Page feature. In just a click, you can resize a page to fit its content. Quickly customize the margin by specifying the space between design elements and the edge of the page.



Progressive Image Editing

Powerful new photo editing features let you elevate your images in fewer steps. Enjoy a faster, easier route to flawless images and gain back valuable time to exceed client expectations.

NEW! Adjustments docker/inspector

Get instant access to the most critical and frequently used filters, letting you quickly work non-destructively, in real time, and in context. The brand-new Local Adjustment Mode simplifies targeting a filter to a specific image area.

When the results of an adjustment are perfect, the settings can be saved in a click for reuse. You can also choose which filters are on by default at launch so you can get right to work.

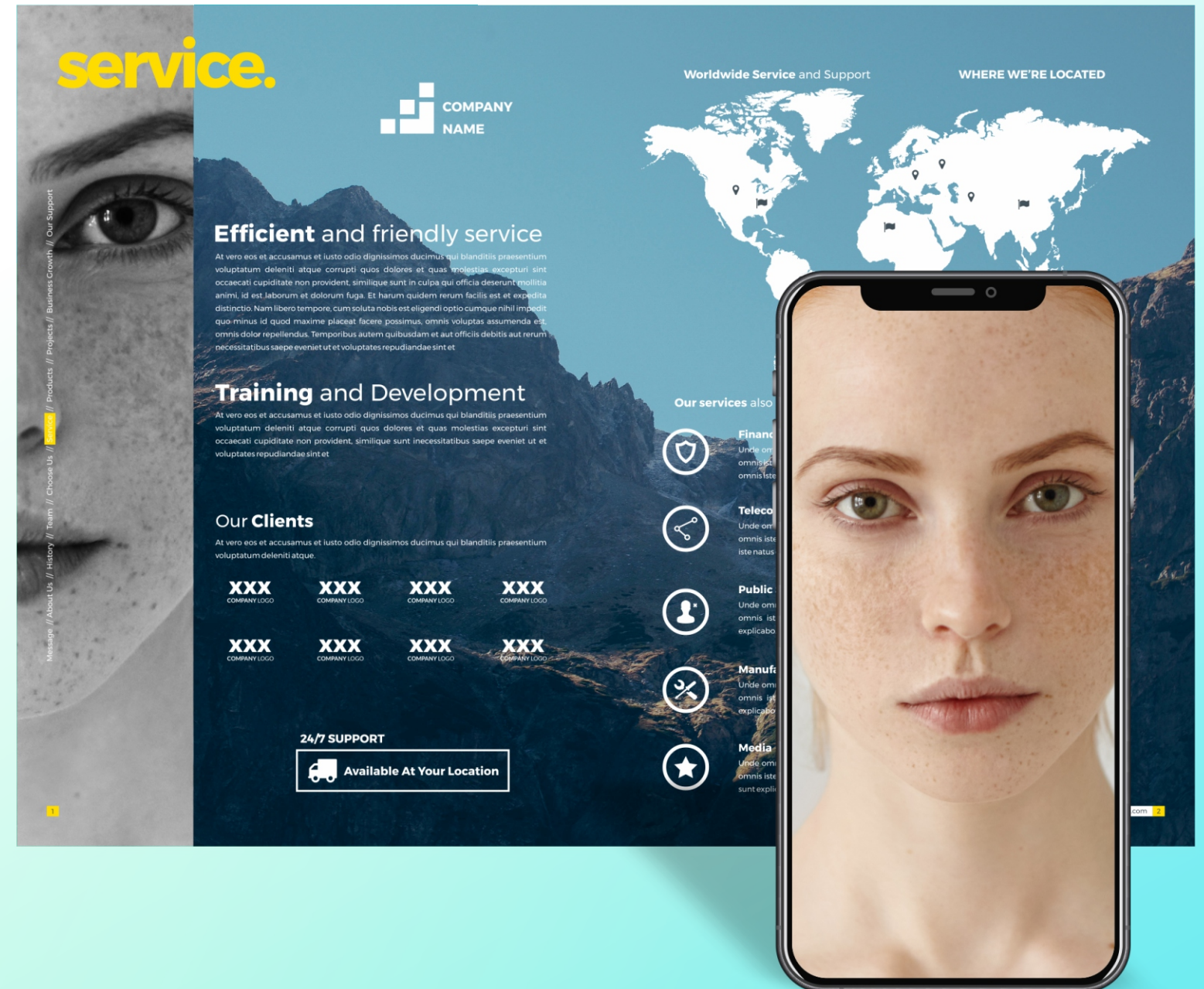
NEW! Replace Colors

The Replace Colors filter has been rebuilt from the ground up. Improved color pickers and eyedropper tools allow for more precise editing and a new interactive control makes fine-tuning hue and saturation ranges more intuitive. Corel PHOTO-PAINT 2021 has also added a slider to help ensure smoother color transitions between selected and unselected pixels.

Watch video 

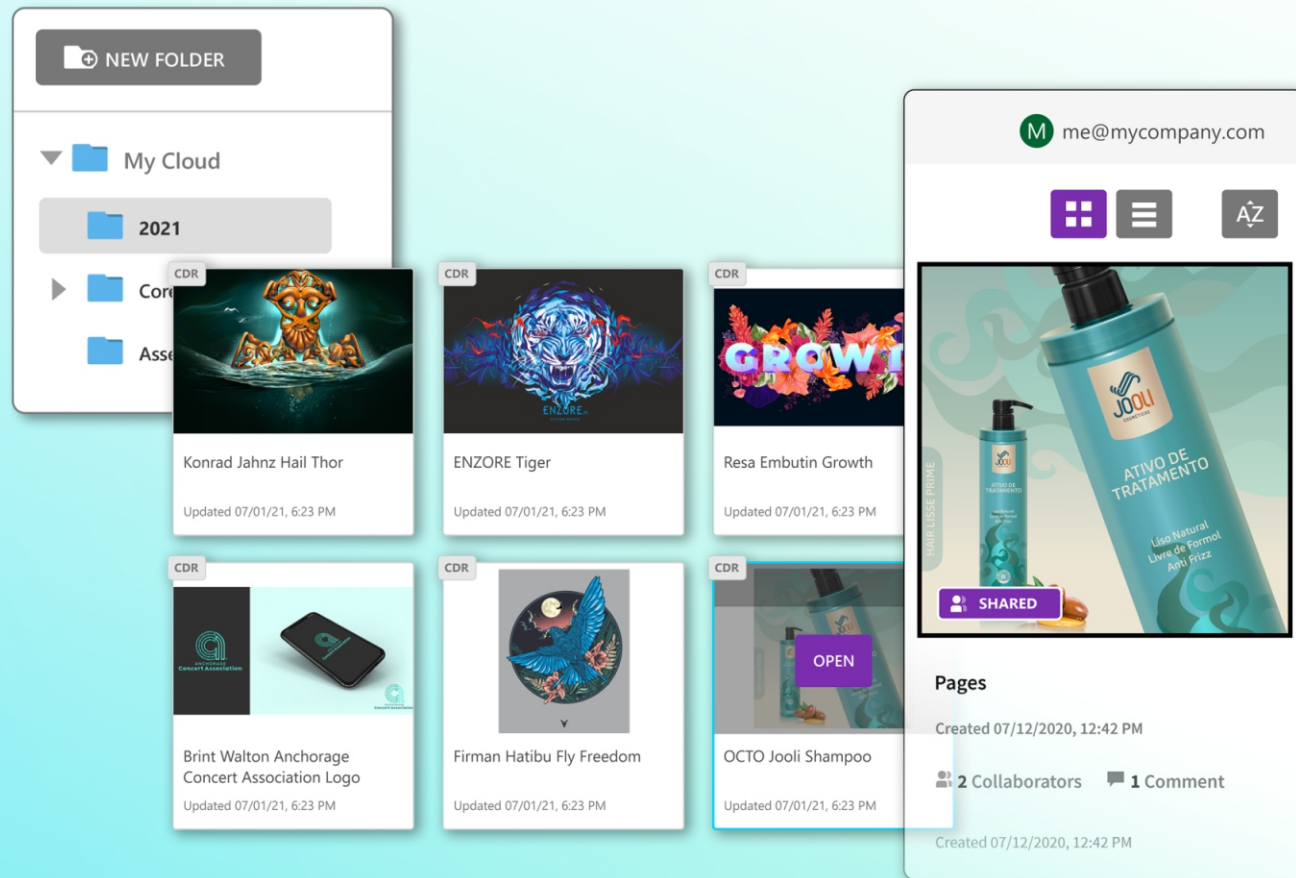
NEW! HEIF support

Take advantage of photos captured on smartphones with High Efficiency Image File (HEIF) support in both Corel PHOTO-PAINT and CorelDRAW 2021.



Next-Generation Collaboration

Taking our ground-breaking collaboration features even further, the newly enhanced CorelDRAW.app makes it possible to work with clients and colleagues on design projects in real time. With faster ways to connect and support for Microsoft Teams, CorelDRAW Graphics Suite 2021 makes it simpler than ever to keep projects on track, even as we're forced to work apart.



NEW! Live Comments

The new Live Comments feature lets everyone involved in a project work in real time. Stakeholders can comment on and annotate a document in CorelDRAW.app with all feedback instantly appearing in the working file in CorelDRAW 2021. When a designer needs clarification on a piece of input, reviewers immediately see the query in CorelDRAW.app, eliminating any slowdowns in the refinement process and accelerating approvals.

[Watch video](#) 

NEW! Dashboard

A new dashboard in both CorelDRAW 2021 and CorelDRAW.app acts as your collaboration hub. It contains all your design files in the cloud and, in a click, displays a preview, the number of comments and team members, and project status. The dashboard also lets you share designs directly from CorelDRAW 2021 without having to open each file.

[Watch video](#) 

NEW! CorelDRAW.app for Microsoft Teams

CorelDRAW.app for Teams lets you view and edit your CorelDRAW design files in Microsoft Teams. Sign in with your Microsoft 365 corporate user account to create new designs in a meeting, and collaboratively review designs with your team members in real time right inside your Teams channels.

Note: Collaboration features are available exclusively with a CorelDRAW Graphics Suite subscription, licensing with maintenance, or an additional purchase plan for perpetual license customers.

“ CorelDRAW
helps me
transform my
imagination into
incredible
designs.”

Firman Hatibu



Firman Hatibu

CorelDRAW Family of Products

CorelDRAW Graphics Suite 2021 is part of our full range of creative graphics software solutions to meet the needs of hobbyists, home businesses, and professional graphics users. Other products in the CorelDRAW family include:

NEW! CorelDRAW Essentials 2021

When first starting out or dabbling in graphic design, this versatile vector illustration software enables you to bring your design ideas to life. Create posters, cards, calendars, social media images, and more, quickly and with confidence.

NEW! CorelDRAW Standard 2021

Tackle designs for your home projects or small business with this introductory suite of illustration, layout, and photo editing tools. Tips and tutorials help you create designs no matter your skill level or area of expertise.

CorelDRAW Technical Suite

Ideal for engineering, architecture, and manufacturing, CorelDRAW Technical Suite offers exceptional control and precision for flawless technical documentation and design. With unique tools for the technical illustration workflow, produce intricate graphics and virtually any kind of visual communication in record time.





System Requirements

CorelDRAW[®] GRAPHICS SUITE 2021 FOR WINDOWS

CorelDRAW[®] MICROSOFT STORE EDITION

- Windows 10*, 64-bit, with latest Updates
- Intel Core i3/5/7/9 or AMD Ryzen 3/5/7/9/Threadripper, EPYC
- OpenCL 1.2-enabled video card with 3+ GB VRAM
- 4 GB RAM (8+ GB or more recommended)
- 4.3 GB available hard disk space for application and installation files
- Multi-touch screen, mouse or tablet
- 1280 x 720 screen resolution at 100% (96 dpi)
- DVD drive optional (for box installation)
- Installation from DVD requires a download of up to 900 MB
- Internet connection is required to install and authenticate CorelDRAW Graphics Suite and access some of the included software components, online features and content.

CorelDRAW[®] GRAPHICS SUITE 2021 FOR MAC

CorelDRAW[®] FOR MAC APP STORE

- macOS Big Sur 11.0 or macOS Catalina 10.15, with the latest revision
- Multicore Intel or Apple M1 processor
- OpenCL 1.2-enabled video card with 3+ GB VRAM
- 4 GB RAM (8 GB RAM or more recommended)
- 4 GB available hard disk space for application files (Solid-state drive recommended); Case-sensitive file systems are not supported
- 1280 x 800 screen resolution (1920 x 1080 recommended)
- Mouse or tablet
- Internet connection is required to install and authenticate CorelDRAW Graphics Suite and access some of the included software components, online features and content.

*CorelDRAW Graphics Suite 2021 supports Windows 10, version 2004, 20H2 and later versions which may be released during the lifecycle of CorelDRAW Graphics Suite 2021.



CorelDRAW[®]

GRAPHICS SUITE 2021

About Corel

Corel products enable millions of connected knowledge workers around the world to do great work faster. Offering some of the industry's best-known software brands, we give individuals and teams the power to create, collaborate, and deliver impressive results. Our success is driven by an unwavering commitment to deliver a broad portfolio of innovative applications – including CorelDRAW[®], MindManager[®], Parallels[®], and WinZip[®] – to inspire users and help them achieve their goals.

To learn more about Corel, please visit www.corel.com.

Copyright ©2021 Corel Corporation.

CorelDRAW[®] Graphics Suite 2021 Reviewer's Guide

Corel, CorelDRAW, the CorelDRAW balloon logo, CorelDRAW.app, AfterShot, Corel PHOTO-PAINT, MindManager, and WinZip are trademarks or registered trademarks of Corel Corporation in Canada, the U.S. and elsewhere. Parallels is a trademark or registered trademark of Parallels International GmbH in Canada, the U.S. and elsewhere. Apple, Apple Pencil, iPad, Mac, MacBook Pro, macOS, Sidecar, and Touch Bar are trademarks of Apple Inc. All other company, product and service names, logos, brands and any registered or unregistered trademarks mentioned are used for identification purposes only and remain the exclusive property of their respective owners. Use of any brands, names, logos or any other information, imagery or materials pertaining to a third party does not imply endorsement. We disclaim any proprietary interest in such third-party information, imagery, materials, marks and names of others. For all notices and information about patents please visit www.corel.com/patents

Original sample artwork is provided by third parties and is used, and/or modified, by permission, unless otherwise agreed with such parties.



Konrad Jahnz

CorelDRAW[®]
GRAPHICS SUITE 2021

